



Municipal Newsletter – September 2021

News from your municipality!

Notice of Closure – Federal Election

The Federal election will be held on Monday, September 20. As a result, the administrative offices of the municipality will be transformed into a voting location by Elections Canada. The administrative team will be working from home that day and will be available by email or by phone.

Mylène Thibault admin@ivry-sur-le-lac.qc.ca

Sylvain Royer inspecteur@ivry-sur-le-lac.qc.ca

Josiane Alarie directiongenerale@ivry-sur-le-lac.qc.ca

Thank you for your understanding.

Thank you to our summer team!

The summer is coming to an end and students are back in class. It is now time to say a huge thank you to our students who have helped us during the summer. Their presence is made possible thanks to the Federal Summer Jobs Canada partnership. Thank you to Mathieu Tousignant for road department support over the last three years. Thank you to Julien Courchesne, attendant at the wash station and the boat launch. Thanks also to Sébastien Marchand, assistant inspector for urbanism.

We would also like to thank Louise Brisebois, wash station and boat launch attendant who will be on duty until October 11th.

Thank you for your terrific work throughout the summer, your efforts were greatly appreciated!

Important Message - Municipal Washing Station and Landing

The Municipal Boat Washing Station and Landing will be close for the season on Monday, October 11 at 4:30 p.m.! We ask that you plan to have your watercraft out by October 11, 2021 if at all possible. After that date, you will need to make an appointment with the administration during office hours only. Service will not be provided on weekends.

You must make an appointment by calling 819-321-2332 at least 24 hours in advance, during regular business hours.

Thank you for your understanding,

COVID-19 Vaccine Passport

The vaccination passport has been in effect in Quebec since September 1st. This is an essential and free tool that certifies that a person is adequately protected against COVID-19. The vaccine passport will be required for access to certain non-essential places or activities where the risk of transmission between people is considered high. These activities include events or festivals, theaters, sports venues, casinos, movie theatres, training facilities, team sports, restaurants and some extracurricular activities.

Visit the link of places and activities for the most updated version: <https://www.quebec.ca/en/health/health-issues/a-z/2019-coronavirus/progress-of-the-covid-19-vaccination/covid-19-vaccination-passport/places-and-activities-requiring-covid-19-vaccination-passport>

COVID-19 New site of vaccination in Sainte-Agathe-des-Monts

The vaccination campaign against COVID-19 is still going on for people aged 12 and over. The CISSS des Laurentides would like to inform the population of the change of address of the Sainte-Agathe-des-Monts vaccination site. The new vaccination site, since September 2, is now located at:

Place Lagny

2, rue Saint-Louis

Sainte-Agathe-des-Monts J8C 2A2

Loisirs Laurentides celebrates its 50th anniversary!

Loisirs Laurentides is a non-profit organization involved in the field of recreation, sports and outdoor activities, supported by the Ministry of Education and the Ministry of Culture and Communications, which was founded in 1971. As part of its 50th anniversary celebrations, Loisirs Laurentides is inviting the public to take up a challenge in the greater Laurentian region. Anyone wishing to participate is being asked to walk one of the three proposed trails:

1. *Parois de l'aube au Parc régional de la Montagne du Diable* Trail (Village des Bâtisseurs, 1100 Chemin Léandre Meilleur, Ferme-Neuve)
2. *Mont-Sainte-Agathe au Camping Sainte-Agathe-des-Monts* Trail (2, chemin du Lac-des-Sables, Sainte-Agathe-des-Monts)
3. *École L'Orée des Bois* Trail (360, côte Saint-Nicholas, Saint-Colomban)

Participants may be eligible to win prizes. To participate you must take a picture of yourself in front of a 50th anniversary LL poster and register on the Loisirs Laurentides website at www.loisirs laurentides.com

Presence of a native aquatic plant – Lac Manitou

It has been brought to our attention that there is an aquatic plant causing much concern in Lac Manitou. We contacted the Regional Environmental Council and a biologist there confirmed that it is not Eurasian water milfoil. Rather, it is elodea (Canada or Nuttall), a native aquatic plant, therefore NOT invasive, and which is quite common in the region.

Watercraft that are present on the lake can mow the plants in the water and they sometimes end up floating to the water's surface.

It is not recommended to remove aquatic plants since some species are not naturally rooted and it is therefore normal for them to float to the surface. In addition, aquatic plants play several essential roles in the ecosystem.

Motorized navigation through aquatic plants should be avoided as it may disturb aquatic wildlife.

Mon vrac sans sac!

Did you know? It is not recommended to put your recyclables in a plastic bag before putting them in the green bin. By putting them directly in the bin, you reduce your consumption of single-use plastic bags, decrease your impact on the environment and make the work of the waste sorting centre employees easier! For more information on waste management, please visit the www.traindeviedurable.com.



Temporary Carports

It's now time to start thinking about the approaching winter season. Temporary carports are only permitted in all setbacks and parking areas from October 1st of one year to May 1st of the following year under By-law No. 2013-060, and Sections 206 and 368.

Heavy Traffic in the Emergency Room

The *Centre intégré de santé et services sociaux des Laurentides* (CISSS) informs us that the number of patients in the six hospitals in the Laurentian region is high. The CISSS wishes to remind the population of the alternatives to the emergency room.

- call Info-Santé at 811;
- consult your family doctor;
- see a doctor at a walk-in clinic;
- consult your pharmacist; or
- go to the emergency room as a last resort.

A person whose situation requires urgent care should not hesitate to go to the emergency room to receive the essential care they need.

Special Brown bin!





Spécial bac brun

TRUC INFALLIBLE

Si vous répondez **OUI** à l'une de ces 3 questions, ça signifie que c'est une matière acceptée dans le bac brun.

- Est-ce que ça se mange ?
- Est-ce que c'est un papier ou un carton souillé ? (non ciré)
- Est-ce que c'est un résidu de jardin ?

À l'aide de ce truc et parmi les items ci-dessous, **saurez-vous trouver 7 matières qui sont acceptées** dans le bac brun? (Réponses ci-dessous)



Les matières acceptées sont : Sachet de thé (sans l'agrafe), toutes les parties de fruits et légumes, pain moisi, feuille morte, cuisse de poulet (avec os), serviettes de table et coquilles d'œuf.

SAVIEZ-VOUS QUE?

Le verre disposé dans le bac brun est l'un des plus grands contaminants du compost. En se cassant en morceaux fins, le verre est une matière très difficile à enlever une fois retrouvée dans les matières organiques.

ERREURS FRÉQUENTES

 Sac de plastique	 Contenant en verre	 Légume emballé
 Couche	 Mégot et cendre	 Styromousse

Plus d'informations au TRAINEVIEDURABLE.com

Reminder - Citizen's obligation to provide proof of emptying

According to article 4 of the bylaw 2009-131, when you have your septic installation emptied, it is your responsibility to send proof of the execution of the work to the Municipality no later than October 15th of each year when an emptying is required by bylaw.

Although the various service providers offer to forward the proof to the municipality, we never receive them all. It is preferable to send it to us yourself by e-mail (admin@ivry-sur-le-lac.qc.ca), where we confirm receipt and update your file.

Also, an annual maintenance contract is necessary for certain septic installations (type Ecoflo, Bionest, Enviro-Septic, etc.). The same applies to the annual maintenance. Send us a proof to update your file. We accept a copy of the maintenance contract.

Message from the Sûreté du Québec

For two weeks now, students have been heading back to school. Naturally, there is an increase in traffic on the road network, with school buses, pedestrians, cyclists and crossing guards. Road users are asked to be extra cautious to ensure a safe entrance to school for all.

- Respect the speed limits
- Be vigilant in school zones
- Stop five (5) meters or more from a school bus when the intermittent red lights are on
- Respect the crossing guard's instructions, these take precedence over the signs in case of work

Many parents drop their children off at school, they must make sure to do so in a safe place to avoid careless manoeuvres such as double parking and U-turns.

Happy Return to School!

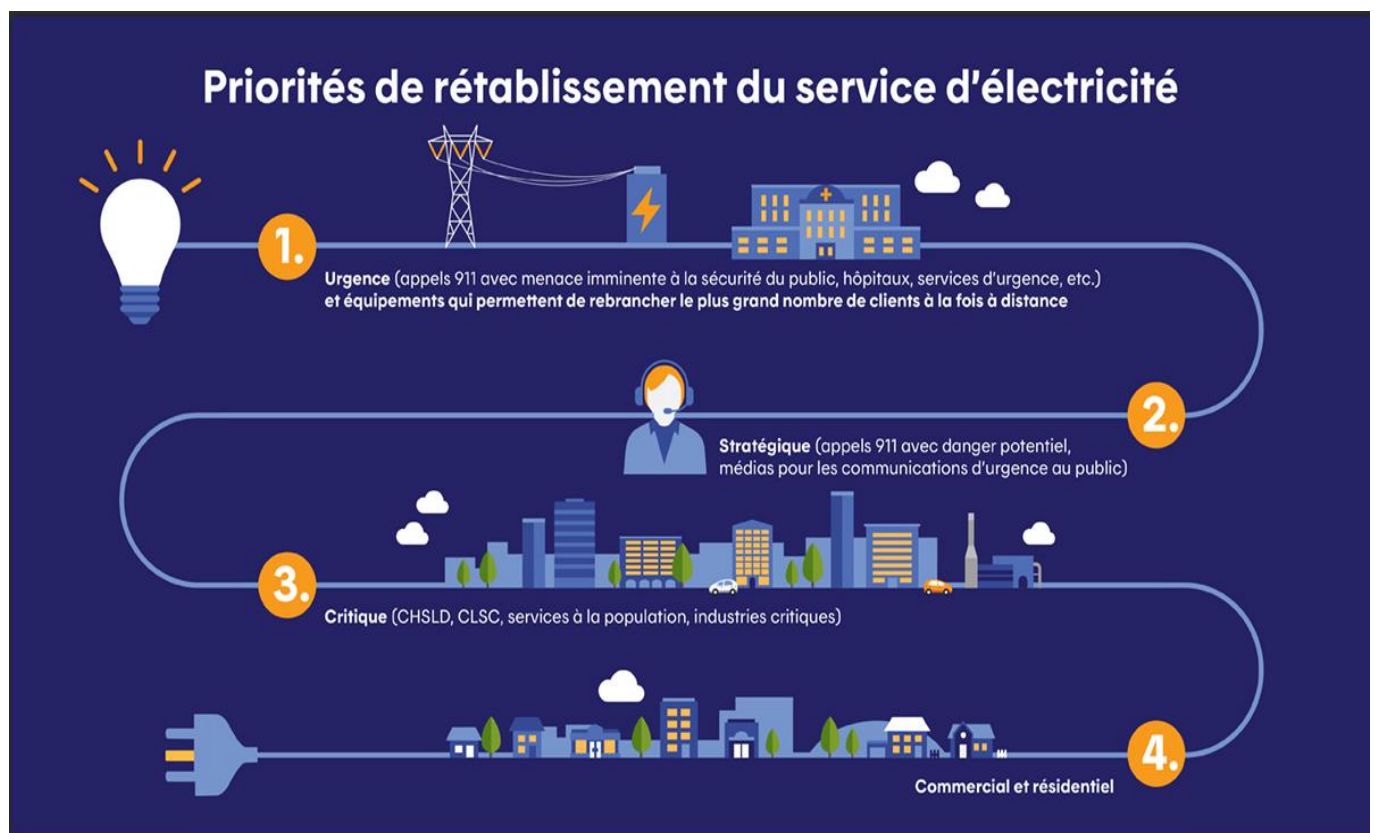
Hydro-Québec, understand electrical failures!

Maintenance work is essential to ensure the efficiency and reliability of the power system. To do this, Hydro-Québec must cut the power supply on occasion. This is called a planned interruption. These interruptions are always listed on the map of upcoming scheduled interruptions on the Hydro-Québec site, under the tab "Upcoming interruptions".

<https://pannes.hydroquebec.com/poweroutages/service-interruption-report/>

Hydro-Québec will notify affected customers in advance. It is therefore essential that your contact information, phone numbers and email addresses be up to date in Customer Centre.

When it's not planned, it's an outage! The main causes of outages are wind gusts, ice, and/or presence of debris on the wires. The strategy for restoring service depends on the nature and extent of the outage.



1. Restore remote service whenever possible
2. Travel to the site to determine the cause
3. Assessment and resolution
4. Assignment of crews

If a major weather event occurs that causes a large number of outages, the recovery time information changes as the diagnosis becomes clearer.

Société Alzheimer

LAURENTIDES

DANS LE CADRE DE LA JOURNÉE MONDIALE DE LA MALADIE D'ALZHEIMER



CONFÉRENCE VIRTUELLE 21 SEPTEMBRE 2021 À 18H30

*«Alzheimer et comportements
difficiles : Mieux s'outiller comme
proche aidant pour y faire face»*

- *Prendre soin de son proche*
- *Prendre soin de soi*
- *Compréhension des comportements difficiles*
- *S'outiller pour mieux interagir*

*ANIMÉE PAR DRE LAURENCE VILLENEUVE,
psychologue spécialisée en vieillissement*

**Conférence GRATUITE,
Places limitées!!!**

INFORMATION ET INSCRIPTION:

Au 1-800-978-7881, poste 227 ou admin@salaurentides.ca

Notice of Closure – Public Holiday

Please note that our administrative offices will be closed on Monday, October 11th for Thanksgiving. The team will be back on Tuesday, October 12th, starting at 9 a.m.

Thank you for your understanding.



Other Subjects of Interest

Should you have other topics you would like us to address in a future municipal Newsletter, just let us know and it will be our pleasure to address them.

Should you have any questions, please do not hesitate to ask. The municipal team is here for you!

Once again, thank you for your trust; it is a real pleasure to represent you!



Mayor,

Daniel Charette

Municipalité d'Ivry-sur-le-Lac

Tél. (819) 321-2332

info@ivry-sur-le-lac.qc.ca