



# ORGANIC WASTE

ORGANIC WASTE THAT IS **LOOSE** OR IN PAPER BAGS ONLY.



## FOOD WASTE

including fresh, frozen, dried, cooked, and prepared food, as well as table scraps.

- Food (cooked, raw, rotten)
- Fruits and vegetables, pasta, bread and grains, flour and sugar
- Dairy products, candy and confections
- Coffee (beans, grounds and filters) and tea bags
- Meat, bones and fish including pet food
- Crab and lobster shells, egg shells, nut shells

## SOILED PAPER AND CARDBOARD

- Food-soiled paper plates and cups, soiled cardboard from food containers (pizza boxes)
- Food-soiled paper towels, facial tissue, and paper napkins

## GREEN WASTE

- Dead leaves, garden waste: flowers, plants, coniferous pine needles, hedge trimmings, and weeds (no exotic or invasive plants)
- Grass, sawdust, bark, wood chips, house plants

## OTHER ITEMS

- Cold fireplace ashes – after 4 weeks, tobacco and cigarette paper
- Hair, animal fur, pet litter (cats, rabbits, hamsters)



**NO PLASTIC BAG IN MY BIN!  
EVEN IF IT IS COMPOSTABLE.**



# ULTIMATE WASTE

GARBAGE ITEMS ARE AT THE END OF THEIR LIFE CYCLE AND CANNOT BE DEPOSITED IN THE COMPOST OR RECYCLE BIN NOR THE ECOCENTRE OR AT A SECOND HAND STORE (THRIFT SHOP) AND ARE DESTINED TO LANDFILL.

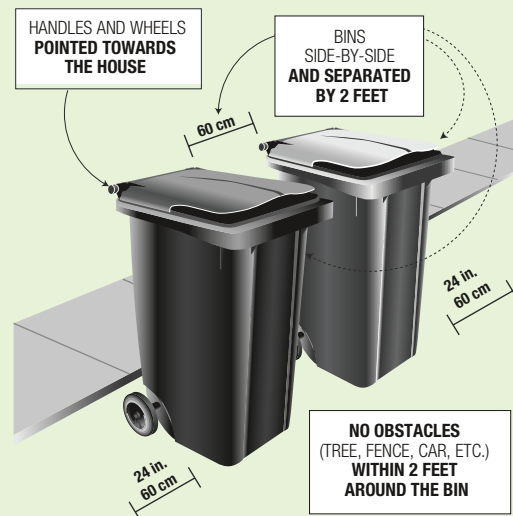
## ACCEPTED ITEMS:

- Diapers
- Broken toys
- Vape pens
- Brushes and mirrors
- Broken dishes and porcelaine
- Dishwashing gloves and sponges
- Plastic straws
- Plastic toothbrushes
- Plastics bags that are non-strechable with your thumb (chip bags, cracker and cookie bags, granola bar wrappers ...)
- All compostable plastics

## HOW TO PLACE YOUR BIN AT THE CURBSIDE

Bins must be placed side by side with a space of 60 cm (24 in.) between each bin. The handles and wheels must be pointed towards the house so that the trucks' automated arm can grab and lift bins.

To allow efficient snow removal during the winter season, bins must be placed on the corner of the driveway, not on the sidewalk or in the street.



# RECYCLABLE MATERIALS

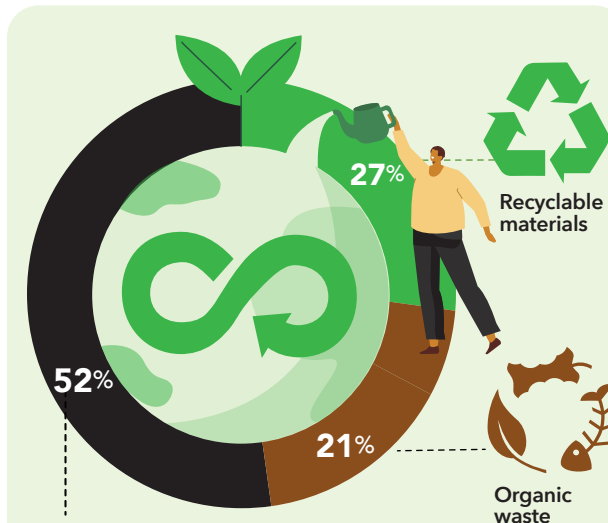
CONTAINERS, PACKAGING AND PRINTED DOCUMENTS ONLY

- ✓ **CLEAN PAPER AND CARDBOARD**
  - Newspapers, flyers, and magazines
  - Unsoiled brown paper
  - Shredded paper (in a transparent bag) tied with a knot
  - Paper bags
  - Cardboard boxes and packaging
  - Phonebooks and books (without covers or binding)
  - Milk, cream, and juice cartons (without straw)
- ✓ **PLASTICS**
  - All containers and lids with the following numbers:
  - All stretchy plastic bags, stretchable packaging, and plastic film (tied together in a clear bag with a knot)
- ✓ **METAL**
  - Cans
  - Beverage cans
  - Aluminium foil
  - Coat hangers (bundled)
- ✓ **GLASS**
  - All glass bottles and containers of any colour



TRAINDEVIEDURABLE.com

# 2023 COLLECTION CALENDAR



Ultimate waste in the MRC

Still today, the majority of materials collected are wasted.

**Together in a collective effort for reduction of garbage to landfill!**



For any collection-related issues, contact RITL.  
[www.ritl.ca](http://www.ritl.ca)  
819 681-3379

819 321-2332  
[info@ivry-sur-le-lac.qc.ca](mailto:info@ivry-sur-le-lac.qc.ca)

TRAINDEVIEDURABLE.com

NOTRE TERRITOIRE  
POUR L'AVENIR  
**MRC DES  
LAURENTIDES**

JANUARY				
M	T	W	T	F
2	3	4	5	6
9	10	11	12	13
16	17	18	19	20
23	24	25	26	27
30	31	1	2	3

FEBRUARY				
M	T	W	T	F
30	31	1	2	3
6	7	8	9	10
13	14	15	16	17
20	21	22	23	24
27	28	1	2	3

MARCH				
M	T	W	T	F
27	28	1	2	3
6	7	8	9	10
13	14	15	16	17
20	21	22	23	24
27	28	29	30	31

APRIL				
M	T	W	T	F
3	4	5	6	7
10	11	12	13	14
17	18	19	20	21
24	25	26	27	28
1	2	3	4	5

MAY				
M	T	W	T	F
1	2	3	4	5
8	9	10	11	12
15	16	17	18	19
22	23	24	25	26
29	30	31	1	2

JUNE				
M	T	W	T	F
29	30	31	1	2
5	6	7	8	9
12	13	14	15	16
19	20	21	22	23
26	27	28	29	30

JULY				
M	T	W	T	F
3	4	5	6	7
10	11	12	13	14
17	18	19	20	21
24	25	26	27	28
31	1	2	3	4

AUGUST				
M	T	W	T	F
31	1	2	3	4
7	8	9	10	11
14	15	16	17	18
21	22	23	24	25
28	29	30	31	1

SEPTEMBER				
M	T	W	T	F
28	29	30	31	1
4	5	6	7	8
11	12	13	14	15
18	19	20	21	22
25	26	27	28	29

OCTOBER				
M	T	W	T	F
2	3	4	5	6
9	10	11	12	13
16	17	18	19	20
23	24	25	26	27
30	31	1	2	3

NOVEMBER				
M	T	W	T	F
30	31	1	2	3
6	7	8	9	10
13	14	15	16	17
20	21	22	23	24
27	28	29	30	1

DECEMBER				
M	T	W	T	F
27	28	29	30	1
4	5	6	7	8
11	12	13	14	15
18	19	20	21	22
25	26	27	28	29

\*It is possible that there will be changes to the calendar, you will be notified if this is the case. For more information, please visit the RITL website: [www.ritl.ca](http://www.ritl.ca)

-  **ORGANIC WASTE** 
-  **RECYCLABLE MATERIALS** 
-  **ORGANIC WASTE + ULTIMATE WASTE**  
-  **ORGANIC WASTE + RECYCLABLE MATERIALS**  

### FREE SERVICE

For MRC des Laurentides residents, NGOs and ICI (Industrial, Commercial and Institutional) <sup>1</sup>

- Recyclable materials 
- Polystyrene and plastic #6
- Construction, Demolition and Renovation materials<sup>2</sup>
- Bulky items (oversized)
- Computers and electronic devices
- Household hazardous waste (HHW)
- Green waste<sup>3</sup>
- Tires and car batteries



<sup>1</sup>Some restrictions apply. <sup>2</sup>Maximum of 26 visits per year for citizens and NGOs. <sup>3</sup>Only accepted at Sainte-Agathe-des-Monts and Mont-Tremblant ecocentres and at the Complexe environnemental de la Rouge – RIDR (all year round).

### SAINTE-AGATHE-DES-MONTS REGIONAL ECOCENTRE

1710, Principale Est

#### Opening hours:

**January 1 to April 30 and**

**November 1 to December 31**

Monday to Saturday: 9 a.m. to 4:30 p.m.

**May 1 to October 31**

Monday to Saturday: 9 a.m. to 4:30 p.m.

**Closed on statutory holidays**

