



# Municipal Newsletter – February 2023

I want to know more about my municipality.

## Tax Bill 2023

The tax bills for the year 2023 were sent by mail on January 27<sup>th</sup>. We are in the second year of triennial roll, for 2022-2023-2024. We take this opportunity to remind you that the first 2023 payment must be made **no later than March 3rd**. It is possible to send us your payment by cheque, through your banking platform, or by coming to City Hall. We remind you that credit cards are not accepted for payment at City Hall.

If you have not received your bill(s), please contact the administrative team by email at [info@ivry-sur-le-lac.qc.ca](mailto:info@ivry-sur-le-lac.qc.ca) or by phone at 819-321-2332 ext. 3700 as soon as possible.

## 2023 Waste Collection Calendar

The new collection calendar is now available. It indicates on how to properly distribute your various residual materials for a better use of the different bins at your disposal. A copy of the calendar has been added to your tax bill.

The calendar is also available on our website:

[https://ivry-sur-le-lac.qc.ca/wp-content/uploads/2023/01/ivry-sur-le-Lac\\_2023\\_Eng.pdf](https://ivry-sur-le-lac.qc.ca/wp-content/uploads/2023/01/ivry-sur-le-Lac_2023_Eng.pdf)



## Time Change

Daylight saving time will be the second Sunday of March, on the night of March 11 to 12, 2023. The time change allows us to reduce our energy consumption by extending the period of sunshine at the end of the day by one hour!

It's also an opportune time to change the batteries in your smoke detectors!

## Activities on Frozen Streams

Due to the large variety of temperatures, we experience each year, many streams will not freeze completely and can be risky during the winter. Before venturing out on a waterway, it is important to take the necessary precautions.

Observe the color of the ice, blue and clear ice is usually stronger. White and opaque ice contains a high portion of surface area, as its resistance depends upon its density. Grey ice usually contains a portion of water, following a thaw for example, and is considered dangerous. No type of ice is 100% safe.

It is also recommended never to venture alone on a frozen lake.



## Quebec Waste Reduction Week year-round for 2023!

This year, the Quebec Waste Reduction Week will take place throughout the year. Each month, a theme is addressed, in February it is packaging!

According to the latest data from RECYCLE-QUÉBEC, 47% of the materials recovered by municipal collection are recycled. We must continue our efforts and over-packaging is an issue. When you shop at the grocery store, you buy products that are wrapped in plastic, glass, cardboard, and metal. Some packaging are recyclable, some are not, and much of it is single use.

### Why do we do this?

To reduce our ecological footprint, to avoid wasting natural resources, to leave a healthy planet for future generations... or to avoid having to take out a full recycling bin every two weeks! Remembering the reason behind our daily efforts helps us keep good habits.

### How can we do this?

If you are already used to bringing your own bags to your favorite grocery store, get reusable and washable bags for your fruits and vegetables for example. This avoids the use of small single-use bags.

Visit a zero-waste retailer and be surprised by the different products they have to offer.

Ref: SQRD.org





# DE L'AIDE POUR VOS **IMPÔTS**

SECTEUR NORD 819-425-8433 poste 24  
SECTEUR SUD 819-326-0819 poste 228

## **MONT-BLANC** **17 MARS**

Bibliothèque  
64, rue de la Culture  
(Salle Bellevue)

## **VAL-DAVID** **22 MARS**

Salle communautaire  
2490, rue de l'Église

## **LABELLE** **23 MARS**

Hôtel de Ville  
1, rue du Pont  
(Salle Wilfrid-Machabée)

## **MONT-TREMBLANT** **8, 15, 22, 29 MARS** **5 AVRIL**

Complexe aquatique  
635, rue Cadieux

## **SAINTE-AGATHE** **8, 15, 22, 29 MARS** **5 AVRIL**

Place Lagny  
2, rue Saint-Louis

## **NOS BÉNÉVOLES VOUS ACCUEILLERONT** **DE 13H30 À 16H00**

## **AUCUN RENDEZ-VOUS NÉCESSAIRE** **CONTRIBUTION VOLONTAIRE**

### **PROCÉDURE**

Les personnes respectant les critères d'admissibilités et résidant sur le territoire de la MRC des Laurentides doivent **se présenter à l'une des plages horaires** avec tous leurs documents.

### **CRITÈRES D'ADMISSIBILITÉS**

- ✓ Personne seule: revenu maximal de 35 000 \$
- ✓ Couple et famille: revenu maximal de 45 000 \$
- ✓ + 2 500 \$ par personne à charge
- ✓ Les revenus de placements, comme les intérêts et dividendes, ne doivent pas dépasser 1 000 \$

## **AUCUNE DEMANDE NE SERA TRAITÉE** **APRÈS CES DATES**

CHAQUE ANNÉE, CE SERVICE EST ACCESSIBLE GRÂCE À VOS DONNS. MERCI DE VOTRE SOUTIEN!  
POUR FAIRE UN DON: [WWW.CAB-LAURENTIDES.ORG](http://WWW.CAB-LAURENTIDES.ORG)

## Voilà! – New platform

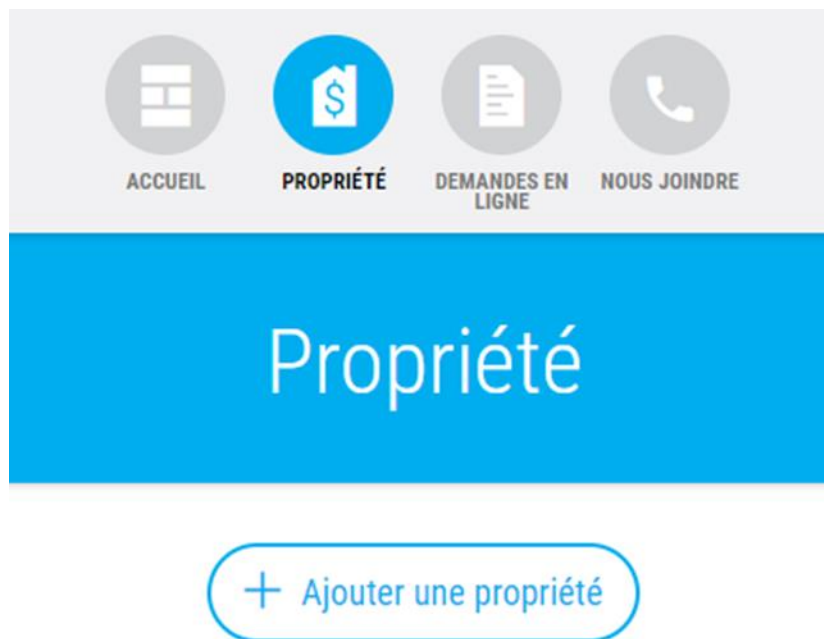
Finally here, the deployment of the Voilà! platform has begun.



This platform allows a better centralization of all municipal services, you now have access to a multitude of services, such as applications for permits, tax accounts, requests, and many more are to come.

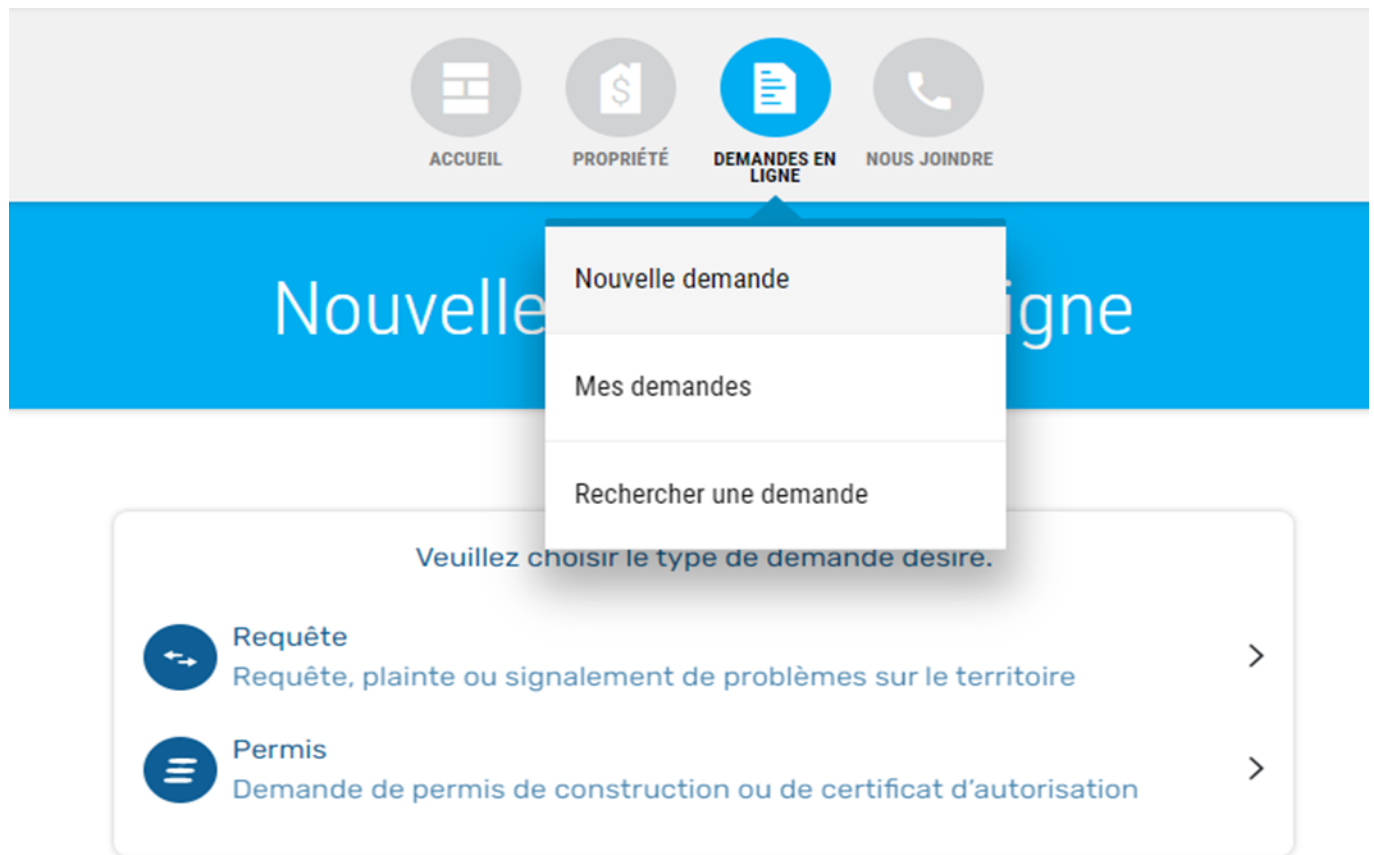
We invite you to register here: <https://ivry-sur-le-lac.appvoila.com/en/>

I would like to have access to my tax account(s):



- On your last tax bill, you will find your registration number and your account number, that's all you need! Once the information is completed and registered, the property is entered into your file.

You wish to apply for a permit, or you have a request to transmit:



## Sport Fishing - Reminder

Sport fishing in Quebec is regulated by the *Ministère des Forêts, Faunes et Parcs*. Lake Manitou is in an area that completely prohibits sport fishing in winter.

However, to find out where it is possible to practice sport fishing in winter, consult the following site:

<https://www.quebec.ca/en/tourism-and-recreation/sporting-and-outdoor-activities/sport-fishing/fishing-quebec>

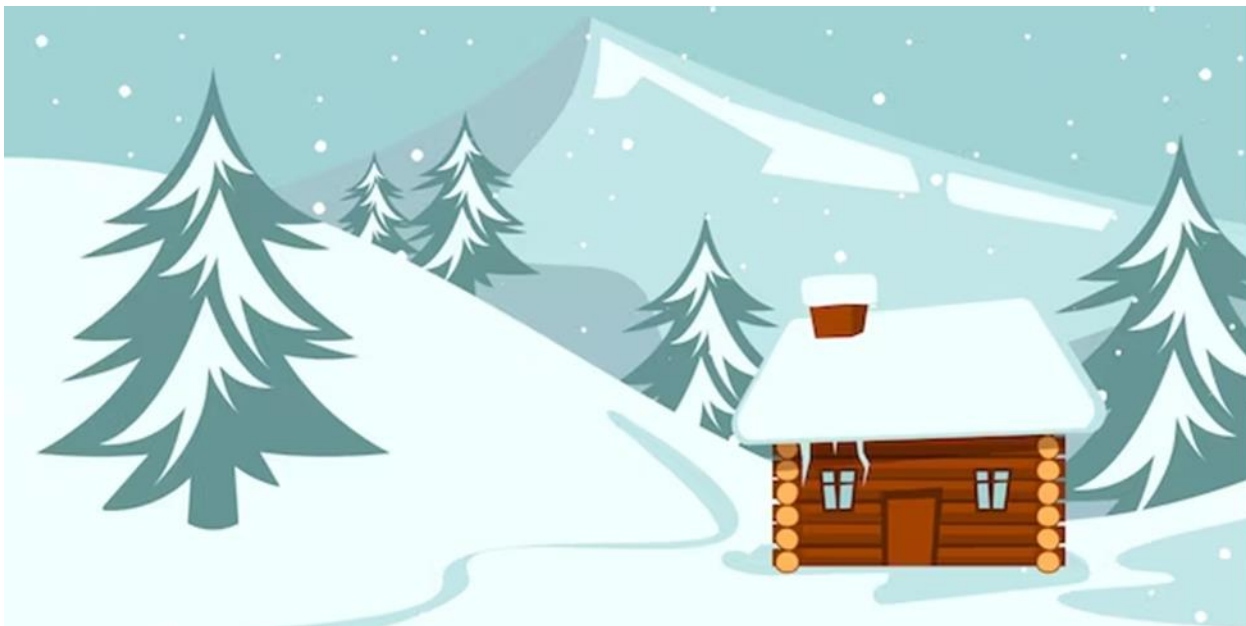


## Snow on my roof, how should I proceed?

The amount of snow accumulating on a roof will vary depending upon the position of the house in relation to its environment. In some cases, the snow may never need to be removed. In the event that snow accumulation is significant, particularly during periods of thaw or during an ice storm, the load increases considerably and the natural drainage of the roof may be compromised by ice formation, thus requiring certain steps to be undertaken.

As a preventative measure and as well as for everyone's safety, the Régie du bâtiment du Québec recommends the following measures to homeowners:

- Remove the excessive accumulated snow in order to avoid the risk of collapse.
- Take the necessary measures to ensure the safety of people walking near the building.
- Pay attention to snow loads on vaulted or rounded roofs, especially if these loads are not evenly distributed.
- Entrust snow removal to qualified companies with the appropriate expertise and equipment.



By entrusting this task to companies with the appropriate methods and equipment, you avoid damaging the waterproof membrane of the roof. However, should you decide to remove the snow from the roof yourself, it is recommended that you do so from the ground, using a roof shovel equipped with a telescopic handle to prevent any risk of falling. Keep in mind that the operation consists of removing the excess snow, leaving a layer of 10 to 15 cm to avoid damaging the roof.

Signs of risk of collapse;

- Appearance of cracks on the walls
- Interior doors that jam or rub when opening or closing
- Unusual crackling noises are heard
- Ceiling distortion

\*Reference: Régie du bâtiment du Québec web site.

<https://www.rbq.gouv.qc.ca/vous-etes/citoyen/penser-securite-a-la-maison/deneiger-et-deglacer.html>

## Message from the CISSS of the Laurentides

When to consult

You are invited to view vignettes to guide you on when to consult.

<https://www.santelaurentides.gouv.qc.ca/soins-et-services/renseignements-utiles/consulter-un-professionnel/videos-quand-consulter/>

## Other Subjects of Interest

Should you have other topics you would like us to address in a future municipal Newsletter, just let us know and it will be our pleasure to address them.

Should you have any questions, please do not hesitate to ask. The municipal team is here for you!

Once again, thank you for your trust; it is a real pleasure to represent you!



Mayor,  
**André Ibghy**  
Municipalité d'Ivry-sur-le-Lac  
Tél. (819) 321-2332  
[maire@ivry-sur-le-lac.qc.ca](mailto:maire@ivry-sur-le-lac.qc.ca)